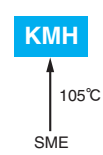


KMH Series

- Endurance with ripple current : 2,000 hours at 105°C
- RoHS2 Compliant

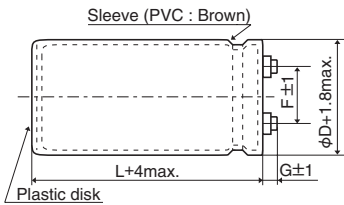


SPECIFICATIONS

Items	Characteristics						
Category	-40 to +105°C (10 to 100V _{dc}) -25 to +105°C (160 to 400V _{dc})						
Temperature Range							
Rated Voltage Range	10 to 400V _{dc}						
Capacitance Tolerance	±20% (M) (at 20°C, 120Hz)						
Leakage Current	I=0.02CV or 5mA, whichever is smaller. Where, I : Max. leakage current (μA), C : Nominal capacitance (μF), V : Rated voltage (V) (at 20°C after 5 minutes)						
Dissipation Factor (tan δ)	Shall not exceed the values shown in the STANDARD RATINGS (at 20°C, 120Hz)						
Low Temperature Characteristics	Capacitance change 10 to 100V _{dc} : C(-40°C)/C(+20°C) ≥ 0.6 160 to 400V _{dc} : C(-25°C)/C(+20°C) ≥ 0.7 (at 120Hz)						
Insulation Resistance	When measured between the terminals that are connected to each other and to the mounting clamp on the insulating sleeve covering the case by using an insulation resistance meter of 500V _{dc} , the insulation resistance shall not be less than 100MΩ.						
Insulation Withstanding Voltage	When a voltage of 2,000V _{ac} is applied for 1 minute between the terminals that are connected to each other and to the mounting clamp on the insulating sleeve covering the case, there shall not be electrical damage.						
Endurance	The following specifications shall be satisfied when the capacitors are restored to 20°C after subjected to DC voltage with the rated ripple current is applied (the peak voltage shall not exceed the rated voltage) for 2,000 hours at 105°C. <table border="1"> <tr> <td>Capacitance change</td> <td>≤ ±20% of the initial value</td> </tr> <tr> <td>D.F. (tan δ)</td> <td>≤ 200% of the initial specified value</td> </tr> <tr> <td>Leakage current</td> <td>≤ The initial specified value</td> </tr> </table>	Capacitance change	≤ ±20% of the initial value	D.F. (tan δ)	≤ 200% of the initial specified value	Leakage current	≤ The initial specified value
Capacitance change	≤ ±20% of the initial value						
D.F. (tan δ)	≤ 200% of the initial specified value						
Leakage current	≤ The initial specified value						
Shelf Life	The following specifications shall be satisfied when the capacitors are restored to 20°C after exposing them for 500 hours at 105°C without voltage applied. Before the measurement, the capacitor shall be preconditioned by applying voltage according to Item 4.1 of JIS C 5101-4. <table border="1"> <tr> <td>Capacitance change</td> <td>≤ ±20% of the initial value</td> </tr> <tr> <td>D.F. (tan δ)</td> <td>≤ 200% of the initial specified value</td> </tr> <tr> <td>Leakage current</td> <td>≤ The initial specified value</td> </tr> </table>	Capacitance change	≤ ±20% of the initial value	D.F. (tan δ)	≤ 200% of the initial specified value	Leakage current	≤ The initial specified value
Capacitance change	≤ ±20% of the initial value						
D.F. (tan δ)	≤ 200% of the initial specified value						
Leakage current	≤ The initial specified value						

DIMENSIONS (Screw-Mount) [mm]

● Terminal Code : LG



φ35 to φ63.5 : G=6
φ76.2 & φ89 : G=5

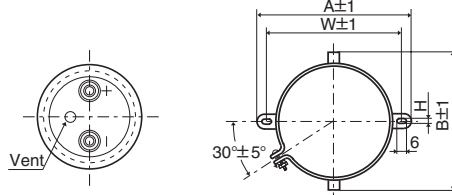
<Screw specifications>

Plus hexagon-headed screw : M5×0.8×10

Maximum screw tightening torque : 3.23Nm

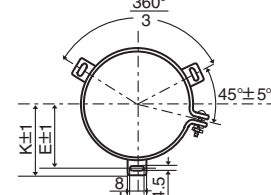
* The screw and the mounting clamp are separately supplied and not attached to the product.

● Mounting Clamp Code : B



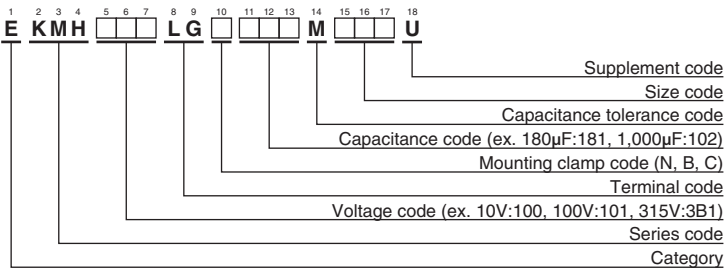
φD	A	B	W	H	F
35	58.0	44.0	48.0	3.5	12.7
50	78.0	64.0	68.0	4.5	22.4
63.5	90.0	76.0	80.0	4.5	28.0
76.2	104.5	90.0	93.5	4.5	31.5

● Mounting Clamp Code : C



φD	E	K	J	F
50	32.5	37.0	14.0	22.4
63.5	38.1	43.5	14.0	28.0
76.2	44.5	50.0	14.0	31.5
89	50.8	56.5	16.0	31.5

PART NUMBERING SYSTEM



Please refer to "Product code guide (screw-mount terminal type)"

◆ STANDARD RATINGS

WV (V _{dc})	Cap (μF)	Case size φD×L(mm)	tan δ	Rated ripple current (Arms/105°C, 120Hz)	Part No.	WV (V _{dc})	Cap (μF)	Case size φD×L(mm)	tan δ	Rated ripple current (Arms/105°C, 120Hz)	Part No.	
10	27,000	35 × 50	0.45	4.90	EKMH100LGB273MA50U	35	56,000	50 × 100	0.40	11.4	EKMH350LGC563MCA0U	
	33,000	35 × 50	0.50	5.10	EKMH100LGB333MA50U		68,000	50 × 120	0.40	13.6	EKMH350LGC683MCC0U	
	39,000	35 × 60	0.50	5.90	EKMH100LGB393MA60U		82,000	63.5 × 100	0.45	14.8	EKMH350LGC823MDA0U	
	47,000	35 × 80	0.50	7.10	EKMH100LGB473MA80U		100,000	63.5 × 120	0.45	17.6	EKMH350LGC104MDC0U	
	56,000	35 × 80	0.60	7.10	EKMH100LGB563MA80U		120,000	63.5 × 120	0.55	17.6	EKMH350LGC124MDC0U	
	68,000	35 × 100	0.60	8.50	EKMH100LGB683MAA0U		150,000	76.2 × 120	0.65	19.8	EKMH350LGC154MEC0U	
	82,000	35 × 100	0.65	8.90	EKMH100LGB823MAA0U		180,000	76.2 × 120	0.80	19.8	EKMH350LGC184MEC0U	
	100,000	35 × 120	0.65	10.7	EKMH100LGB104MAC0U		220,000	76.2 × 140	0.80	23.4	EKMH350LGC224MEE0U	
	120,000	50 × 80	0.75	11.0	EKMH100LGC124MC80U		270,000	89 × 140	1.00	25.5	EKMH350LGC274MFE0U	
	150,000	50 × 100	0.80	13.2	EKMH100LGC154MCA0U		50	3,900	35 × 50	0.20	2.80	EKMH500LGB392MA50U
	180,000	50 × 120	0.80	15.7	EKMH100LGC184MCC0U			4,700	35 × 50	0.20	3.10	EKMH500LGB223MA50U
	220,000	50 × 120	0.85	16.8	EKMH100LGC224MCC0U			5,600	35 × 50	0.20	3.30	EKMH500LGB562MA50U
	270,000	63.5 × 120	1.00	19.6	EKMH100LGC274MDC0U			6,800	35 × 50	0.25	3.30	EKMH500LGB682MA50U
	330,000	63.5 × 120	1.20	19.7	EKMH100LGC334MDC0U			8,200	35 × 60	0.25	3.80	EKMH500LGB822MA60U
	390,000	76.2 × 120	1.50	21.3	EKMH100LGC394MCC0U			10,000	35 × 80	0.25	4.60	EKMH500LGB103MA80U
	470,000	76.2 × 120	1.80	21.4	EKMH100LGC474MEC0U			12,000	35 × 80	0.25	5.10	EKMH500LGB123MA80U
560,000	76.2 × 140	2.00	23.6	EKMH100LGC564MEE0U	15,000	35 × 80		0.25	5.70	EKMH500LGB153MA80U		
680,000	89 × 140	2.40	26.0	EKMH100LGC684MFE0U	18,000	35 × 100		0.25	6.70	EKMH500LGB183MAA0U		
16	18,000	35 × 50	0.40	4.20	EKMH160LGB183MA50U	22,000		35 × 120	0.25	8.10	EKMH500LGB223MAC0U	
	22,000	35 × 50	0.40	4.70	EKMH160LGB223MA50U	27,000		50 × 80	0.25	9.10	EKMH500LGC273MC80U	
	27,000	35 × 60	0.40	5.50	EKMH160LGB273MA60U	33,000		50 × 100	0.25	11.1	EKMH500LGC333MCA0U	
	33,000	35 × 60	0.45	5.70	EKMH160LGB333MA60U	39,000		50 × 120	0.25	13.1	EKMH500LGC393MCC0U	
	39,000	35 × 80	0.45	6.80	EKMH160LGB393MA80U	47,000		50 × 120	0.30	13.9	EKMH500LGC473MCC0U	
	47,000	35 × 80	0.50	7.10	EKMH160LGB473MA80U	56,000		63.5 × 100	0.35	13.9	EKMH500LGC563MDA0U	
	56,000	35 × 100	0.50	8.40	EKMH160LGB563MAA0U	68,000		63.5 × 120	0.35	16.6	EKMH500LGC683MDC0U	
	68,000	35 × 100	0.55	8.80	EKMH160LGB683MAA0U	82,000	76.2 × 120	0.40	18.9	EKMH500LGC823MEC0U		
	82,000	50 × 80	0.55	10.7	EKMH160LGC823MC80U	100,000	76.2 × 120	0.45	19.5	EKMH500LGC104MEC0U		
	100,000	50 × 80	0.65	10.8	EKMH160LGC104MC80U	120,000	76.2 × 120	0.55	19.5	EKMH500LGC124MEC0U		
	120,000	50 × 100	0.65	13.1	EKMH160LGC124MCA0U	150,000	89 × 140	0.60	23.9	EKMH500LGC154MFE0U		
	150,000	50 × 120	0.70	15.3	EKMH160LGC154MCC0U	180,000	89 × 140	0.75	23.9	EKMH500LGC184MFE0U		
	180,000	50 × 120	0.80	15.7	EKMH160LGC184MCC0U	63	2,700	35 × 50	0.20	2.30	EKMH630LGB272MA50U	
	220,000	63.5 × 120	0.85	19.2	EKMH160LGC224MDC0U		3,300	35 × 50	0.20	2.50	EKMH630LGB332MA50U	
	270,000	63.5 × 120	1.00	19.6	EKMH160LGC274MDC0U		3,900	35 × 50	0.20	2.80	EKMH630LGB392MA50U	
	330,000	76.2 × 120	1.30	21.1	EKMH160LGC334MEC0U		4,700	35 × 50	0.20	3.10	EKMH630LGB472MA50U	
390,000	76.2 × 120	1.50	21.3	EKMH160LGC394MCC0U	5,600		35 × 60	0.20	3.50	EKMH630LGB562MA60U		
470,000	76.2 × 140	1.60	24.2	EKMH160LGC474MEE0U	6,800		35 × 60	0.20	3.90	EKMH630LGB682MA60U		
560,000	89 × 140	2.00	28.1	EKMH160LGC564MFE0U	8,200		35 × 80	0.20	4.70	EKMH630LGB822MA80U		
680,000	89 × 140	2.40	28.5	EKMH160LGC684MFE0U	10,000		35 × 80	0.25	4.70	EKMH630LGB103MA80U		
25	12,000	35 × 50	0.35	3.70	EKMH250LGB123MA50U		12,000	35 × 100	0.25	5.50	EKMH630LGB123MAA0U	
	15,000	35 × 50	0.35	4.10	EKMH250LGB153MA50U		15,000	35 × 120	0.25	6.60	EKMH630LGB153MAC0U	
	18,000	35 × 60	0.35	4.80	EKMH250LGB183MA60U		18,000	50 × 80	0.25	7.40	EKMH630LGC183MC80U	
	22,000	35 × 60	0.35	5.30	EKMH250LGB223MA60U		22,000	50 × 100	0.25	9.00	EKMH630LGC223MCA0U	
	27,000	35 × 80	0.35	6.40	EKMH250LGB273MA80U		27,000	50 × 120	0.25	10.9	EKMH630LGC273MCC0U	
	33,000	35 × 80	0.40	6.70	EKMH250LGB333MA80U		33,000	50 × 120	0.25	12.0	EKMH630LGC333MCC0U	
	39,000	35 × 100	0.40	7.80	EKMH250LGB393MAA0U		39,000	63.5 × 100	0.30	12.5	EKMH630LGC393MDA0U	
	47,000	35 × 120	0.40	9.30	EKMH250LGB473MAC0U		47,000	63.5 × 120	0.30	14.9	EKMH630LGC473MDC0U	
	56,000	50 × 80	0.45	9.70	EKMH250LGC563MCA0U	56,000	63.5 × 120	0.30	16.3	EKMH630LGC563MDC0U		
	68,000	50 × 100	0.45	11.2	EKMH250LGC683MCA0U	68,000	76.2 × 120	0.35	18.4	EKMH630LGC683MEC0U		
	82,000	50 × 100	0.50	11.2	EKMH250LGC823MCA0U	82,000	76.2 × 140	0.40	20.0	EKMH630LGC823MEE0U		
	100,000	50 × 120	0.50	14.8	EKMH250LGC104MCC0U	100,000	76.2 × 140	0.50	20.0	EKMH630LGC104MEE0U		
	120,000	63.5 × 100	0.65	14.9	EKMH250LGC124MDA0U	120,000	89 × 140	0.60	21.8	EKMH630LGC124MFE0U		
	150,000	63.5 × 120	0.65	17.9	EKMH250LGC154MDC0U	80	2,200	35 × 50	0.15	2.40	EKMH800LGB272MA50U	
	180,000	63.5 × 120	0.80	17.9	EKMH250LGC184MDC0U		2,700	35 × 50	0.15	2.70	EKMH800LGB272MA50U	
	220,000	76.2 × 120	0.85	21.3	EKMH250LGC224MEC0U		3,300	35 × 50	0.15	3.00	EKMH800LGB332MA50U	
270,000	76.2 × 120	1.00	21.7	EKMH250LGC274MEC0U	3,900		35 × 60	0.15	3.40	EKMH800LGB392MA60U		
330,000	76.2 × 140	1.20	23.4	EKMH250LGC334MEE0U	4,700		35 × 60	0.15	3.70	EKMH800LGB472MA60U		
390,000	89 × 140	1.50	24.9	EKMH250LGC394MFE0U	5,600		35 × 80	0.15	4.50	EKMH800LGB562MA80U		
35	8,200	35 × 50	0.30	3.30	EKMH350LGB822MA50U		6,800	35 × 80	0.15	4.90	EKMH800LGB682MA80U	
	10,000	35 × 50	0.30	3.60	EKMH350LGB103MA50U		8,200	35 × 100	0.20	5.10	EKMH800LGB822MAA0U	
	12,000	35 × 60	0.30	4.20	EKMH350LGB123MA60U		10,000	35 × 120	0.20	6.10	EKMH800LGB103MAC0U	
	15,000	35 × 60	0.30	4.70	EKMH350LGB153MA60U		12,000	50 × 80	0.20	6.70	EKMH800LGC123MC80U	
	18,000	35 × 80	0.30	5.70	EKMH350LGB183MA80U		15,000	50 × 100	0.20	8.30	EKMH800LGC153MCA0U	
	22,000	35 × 80	0.30	6.30	EKMH350LGB223MA80U		18,000	50 × 120	0.20	9.90	EKMH800LGC183MCC0U	
	27,000	35 × 100	0.30	7.50	EKMH350LGB273MAA0U		22,000	50 × 120	0.20	11.0	EKMH800LGC223MCC0U	
	33,000	35 × 120	0.30	9.00	EKMH350LGB333MAC0U		27,000	63.5 × 100	0.25	11.4	EKMH800LGC273MDA0U	
	39,000	50 × 80	0.35	9.20	EKMH350LGC393MC80U		33,000	76.2 × 100	0.25	13.9	EKMH800LGC333MEA0U	
	47,000	50 × 100	0.35	11.2	EKMH350LGC473MCA0U		39,000	76.2 × 100	0.30	13.9	EKMH800LGC393MEA0U	



◆ **STANDARD RATINGS**

WV (V _{dc})	Cap (μF)	Case size φD×L(mm)	tan δ	Rated ripple current (Arms/105°C, 120Hz)	Part No.	WV (V _{dc})	Cap (μF)	Case size φD×L(mm)	tan δ	Rated ripple current (Arms/105°C, 120Hz)	Part No.	
80	47,000	76.2 × 120	0.30	16.5	EKM800LGC473MEC0U	250	330	35 × 50	0.15	0.90	EKM251LGB331MA50U	
	56,000	76.2 × 120	0.30	18.1	EKM800LGC563MEC0U		390	35 × 50	0.15	1.00	EKM251LGB391MA50U	
	68,000	76.2 × 140	0.35	19.7	EKM800LGC683MEE0U		470	35 × 50	0.15	1.10	EKM251LGB471MA50U	
	82,000	89 × 140	0.40	22.1	EKM800LGC823MFE0U		560	35 × 50	0.15	1.20	EKM251LGB561MA50U	
100	1,800	35 × 50	0.10	2.70	EKM101LGB182MA50U		680	35 × 60	0.15	1.40	EKM251LGB681MA60U	
	2,200	35 × 50	0.10	3.00	EKM101LGB222MA50U		820	35 × 80	0.15	1.60	EKM251LGB821MA80U	
	2,700	35 × 60	0.10	3.50	EKM101LGB272MA60U		1,000	35 × 80	0.20	1.60	EKM251LGB102MA80U	
	3,300	35 × 80	0.10	4.20	EKM101LGB332MA80U		1,200	35 × 80	0.20	1.80	EKM251LGB122MA80U	
	3,900	35 × 80	0.12	4.20	EKM101LGB392MA80U		1,500	35 × 100	0.20	2.10	EKM251LGB152MAA0U	
	4,700	35 × 100	0.12	5.00	EKM101LGB472MAA0U		1,800	35 × 120	0.20	2.50	EKM251LGB182MAC0U	
	5,600	35 × 100	0.12	5.40	EKM101LGB562MAA0U		2,200	50 × 80	0.20	2.90	EKM251LGB102MA80U	
	6,800	35 × 120	0.15	5.80	EKM101LGB682MAC0U		2,700	50 × 100	0.20	3.50	EKM251LGC272MCA0U	
	8,200	50 × 80	0.15	6.40	EKM101LGC822MC80U		3,300	50 × 120	0.20	4.20	EKM251LGC332MCC0U	
	10,000	50 × 100	0.15	7.80	EKM101LGC103MCA0U		3,900	50 × 120	0.20	4.60	EKM251LGC392MCC0U	
	12,000	50 × 120	0.15	9.30	EKM101LGC123MCC0U		10,000	63.5 × 120	0.20	5.70	EKM251LGC103MEE0U	
	15,000	50 × 120	0.15	10.4	EKM101LGC153MCC0U		5,600	63.5 × 120	0.20	6.30	EKM251LGC562MDC0U	
	18,000	63.5 × 100	0.20	10.4	EKM101LGC183MDA0U		6,800	76.2 × 120	0.20	7.70	EKM251LGC682MEC0U	
	22,000	63.5 × 120	0.20	12.5	EKM101LGC223MDC0U		8,200	76.2 × 120	0.20	8.40	EKM251LGC822MEC0U	
	27,000	76.2 × 120	0.25	13.7	EKM101LGC273MEC0U		12,000	76.2 × 140	0.20	10.0	EKM251LGC103MEE0U	
	33,000	76.2 × 120	0.25	15.2	EKM101LGC333MEC0U		12,000	89 × 140	0.20	11.9	EKM251LGC123MFE0U	
39,000	76.2 × 140	0.30	16.1	EKM101LGC393MEE0U	315		180	35 × 50	0.10	0.80	EKM315LGB181MA50U	
47,000	89 × 140	0.30	19.3	EKM101LGC473MFE0U			220	35 × 50	0.10	0.90	EKM315LGB221MA50U	
56,000	89 × 140	0.30	21.1	EKM101LGC563MFE0U			270	35 × 50	0.10	1.00	EKM315LGB271MA50U	
160	560	35 × 50	0.15	1.20			EKM161LGB561MA50U	330	35 × 50	0.10	1.10	EKM315LGB331MA50U
	680	35 × 50	0.15	1.30			EKM161LGB681MA50U	390	35 × 50	0.10	1.20	EKM315LGB391MA50U
	820	35 × 50	0.15	1.40			EKM161LGB821MA50U	470	35 × 60	0.10	1.40	EKM315LGB471MA60U
	1,000	35 × 50	0.15	1.60			EKM161LGB102MA50U	560	35 × 60	0.10	1.50	EKM315LGB561MA60U
	1,200	35 × 60	0.15	1.90			EKM161LGB122MA60U	680	35 × 80	0.10	1.70	EKM315LGB681MA80U
	1,500	35 × 60	0.15	2.10			EKM161LGB152MA60U	820	35 × 80	0.15	1.70	EKM315LGB821MA80U
	1,800	35 × 80	0.15	2.50			EKM161LGB182MA80U	1,000	35 × 100	0.15	2.00	EKM315LGB102MAA0U
	2,200	35 × 80	0.15	2.80			EKM161LGB222MA80U	1,200	35 × 120	0.15	2.40	EKM315LGB122MAC0U
	2,700	35 × 100	0.15	3.30			EKM161LGB272MAA0U	1,500	50 × 80	0.15	2.70	EKM315LGC152MC80U
	3,300	35 × 120	0.15	3.80			EKM161LGB332MAC0U	1,800	50 × 100	0.15	3.30	EKM315LGC182MCA0U
	3,900	50 × 80	0.20	3.80			EKM161LGC392MC80U	2,200	50 × 120	0.15	4.00	EKM315LGC222MCC0U
	4,700	50 × 100	0.20	4.60			EKM161LGC472MCA0U	2,700	50 × 120	0.15	4.40	EKM315LGC272MCC0U
	5,600	50 × 100	0.20	5.10			EKM161LGC562MCA0U	3,300	63.5 × 100	0.15	5.10	EKM315LGC332MDA0U
	6,800	50 × 120	0.20	6.10	EKM161LGC682MCC0U		3,900	63.5 × 120	0.15	6.00	EKM315LGC392MDC0U	
	8,200	63.5 × 100	0.20	7.00	EKM161LGC822MDA0U		4,700	76.2 × 100	0.15	6.80	EKM315LGC472MEA0U	
	10,000	63.5 × 120	0.20	8.40	EKM161LGC103MDC0U		5,600	76.2 × 120	0.15	8.00	EKM315LGC562MDC0U	
12,000	76.2 × 100	0.20	9.40	EKM161LGC123MEA0U	6,800		76.2 × 130	0.15	9.20	EKM315LGC682MED0U		
15,000	76.2 × 120	0.20	11.4	EKM161LGC153MEC0U	8,200	89 × 140	0.15	11.4	EKM315LGC822MFE0U			
18,000	76.2 × 140	0.20	13.4	EKM161LGC183MEE0U	10,000	89 × 140	0.15	12.6	EKM315LGC103MFE0U			
22,000	89 × 140	0.25	14.5	EKM161LGC223MEE0U	350	180	35 × 50	0.10	0.80	EKM351LGB181MA50U		
27,000	89 × 140	0.25	16.0	EKM161LGC273MFE0U		220	35 × 50	0.10	0.90	EKM351LGB221MA50U		
200	330	35 × 50	0.15	0.90		EKM201LGB331MA50U	270	35 × 50	0.10	1.00	EKM351LGB271MA50U	
	390	35 × 50	0.15	1.00		EKM201LGB391MA50U	330	35 × 50	0.10	1.10	EKM351LGB331MA50U	
	470	35 × 50	0.15	1.10		EKM201LGB471MA50U	390	35 × 60	0.10	1.30	EKM351LGB391MA60U	
	560	35 × 50	0.15	1.20		EKM201LGB561MA50U	470	35 × 60	0.10	1.40	EKM351LGB471MA60U	
	680	35 × 50	0.15	1.30		EKM201LGB681MA50U	560	35 × 80	0.10	1.60	EKM351LGB561MA80U	
	820	35 × 50	0.15	1.40		EKM201LGB821MA50U	680	35 × 80	0.15	1.60	EKM351LGB681MA80U	
	1,000	35 × 60	0.15	1.70		EKM201LGB102MA60U	820	35 × 100	0.15	1.80	EKM351LGB821MAA0U	
	1,200	35 × 60	0.15	1.90		EKM201LGB122MA60U	1,000	35 × 120	0.15	2.20	EKM351LGB102MAC0U	
	1,500	35 × 80	0.15	2.30		EKM201LGB152MA80U	1,200	50 × 80	0.15	2.40	EKM351LGC122MC80U	
	1,800	35 × 80	0.15	2.50		EKM201LGB182MA80U	1,500	50 × 100	0.15	3.00	EKM351LGC152MCA0U	
	2,200	35 × 100	0.15	3.00		EKM201LGB222MAA0U	1,800	50 × 120	0.15	3.60	EKM351LGC182MCC0U	
	2,700	35 × 120	0.15	3.60		EKM201LGB272MAC0U	2,200	50 × 120	0.15	4.00	EKM351LGC222MCC0U	
	3,300	50 × 80	0.15	4.10		EKM201LGC332MC80U	2,700	63.5 × 100	0.15	4.60	EKM351LGC272MDA0U	
	3,900	50 × 100	0.15	4.90		EKM201LGC392MCA0U	3,900	76.2 × 120	0.15	6.70	EKM351LGC392MEC0U	
	4,700	63.5 × 100	0.20	5.30	EKM201LGC472MDA0U	5,600	76.2 × 130	0.15	8.30	EKM351LGC562MED0U		
	5,600	63.5 × 100	0.20	5.80	EKM201LGC562MDA0U	6,800	76.2 × 140	0.15	9.50	EKM351LGC682MEE0U		
6,800	63.5 × 120	0.20	6.90	EKM201LGC682MDC0U	8,200	89 × 140	0.15	11.4	EKM351LGC822MFE0U			
8,200	63.5 × 120	0.20	7.60	EKM201LGC822MDC0U	400	180	35 × 50	0.10	0.80	EKM401LGB181MA50U		
10,000	76.2 × 120	0.20	9.30	EKM201LGC103MEC0U		220	35 × 50	0.10	0.90	EKM401LGB221MA50U		
12,000	76.2 × 120	0.20	10.2	EKM201LGC123MEC0U		270	35 × 50	0.10	1.00	EKM401LGB271MA50U		
15,000	76.2 × 140	0.20	12.2	EKM201LGC153MEE0U		330	35 × 60	0.10	1.20	EKM401LGB331MA60U		
18,000	89 × 140	0.25	13.1	EKM201LGC183MFE0U		390	35 × 60	0.10	1.30	EKM401LGB391MA60U		
250	270	35 × 50	0.15	0.80		EKM251LGB271MA50U	470	35 × 80	0.10	1.40	EKM401LGB471MA80U	



KMH Series

◆STANDARD RATINGS

WV (V _{dc})	Cap (μF)	Case size φD×L(mm)	tan δ	Rated ripple current (Arms/105°C, 120Hz)	Part No.	WV (V _{dc})	Cap (μF)	Case size φD×L(mm)	tan δ	Rated ripple current (Arms/105°C, 120Hz)	Part No.
400	560	35 × 80	0.15	1.40	EKMH401LGB561MA80U	400	2,200	63.5 × 100	0.15	4.20	EKMH401LGC222MDA0U
	680	35 × 100	0.15	1.70	EKMH401LGB681MAA0U		3,300	63.5 × 120	0.15	5.50	EKMH401LGC332MDC0U
	820	35 × 120	0.15	2.00	EKMH401LGB821MAC0U		4,700	76.2 × 130	0.15	7.60	EKMH401LGC472MED0U
	1,000	50 × 80	0.15	2.20	EKMH401LGC102MC80U		5,600	89 × 140	0.15	9.40	EKMH401LGC562MFE0U
	1,200	50 × 100	0.15	2.70	EKMH401LGC122MCA0U		6,800	89 × 140	0.15	10.4	EKMH401LGC682MFE0U
	1,500	50 × 120	0.15	3.30	EKMH401LGC152MCC0U						

◆RATED RIPPLE CURRENT MULTIPLIERS

● Frequency Multipliers

Rated voltage (V _{dc})	Case diameter (mm)	Frequency (Hz)					
		50	120	300	1k	10k	50k
10 to 50	φ35 to φ89	0.95	1.00	1.03	1.05	1.09	1.12
63 & 80	φ35	0.90	1.00	1.06	1.10	1.18	1.22
	φ50 to φ89	0.95	1.00	1.03	1.05	1.09	1.12
100	φ35	0.82	1.00	1.12	1.22	1.30	1.33
	φ50	0.90	1.00	1.06	1.10	1.18	1.22
	φ63.5 to φ89	0.95	1.00	1.03	1.05	1.09	1.12
160 to 250	φ35	0.80	1.00	1.19	1.34	1.46	1.52
	φ50 & φ63.5	0.81	1.00	1.14	1.26	1.36	1.41
	φ76.2 & φ89	0.82	1.00	1.12	1.22	1.30	1.33
315 to 400	φ35 to φ89	0.80	1.00	1.19	1.34	1.46	1.52

The deterioration of aluminum electrolytic capacitors accelerates their life due to the internal heating produced by ripple current. For details, refer to Section "5-3 Ripple Current Effect on Lifetime" in the catalog, Technical Note.



- Always read "Notes on Use" before using the product in order to enable you to use the product correctly and prevent any faults and accidents from occurring.
- Request the Product Specification on the product of NIPPON CHEMI-CON CORPORATION to refer to it as well as this brochure prior to the order of the products. Some specific notes on use of the ordered product may be described in the specifications.
- The products listed in this catalog are designed and manufactured for general electronics equipment use and are not intended for use in applications that can adversely affect human life; where the malfunction of equipment may cause damage to life or property. In addition, our products are not intended to be used in specific applications that may cause a major social impact. Please consult with us in advance of usage of our products in the following listed applications. ① Aerospace equipment ② Power generation equipment such as thermal power, nuclear power etc. ③ Medical equipment ④ Transport equipment (automobiles, trains, ships, etc.) ⑤ Transportation control equipment ⑥ Disaster prevention / crime prevention equipment ⑦ Highly publicized information processing equipment ⑧ Submarine equipment ⑨ Other applications that are not considered general-purpose applications.
- The circuits described as examples in this catalog and the "delivery specifications" are featured in order to show the operations and usage of our products, however, this fact does not guarantee that the circuits are available to function in your equipment systems. We are not in any case responsible for any failures or damage caused by the use of information contained herein. You should examine our products, of which the characteristics are described in the "delivery specifications" and other documents, and determine whether or not our products suit your requirements according to the specifications of your equipment systems. Therefore, you bear final responsibility regarding the use of our products.
Please make sure that you take appropriate safety measures such as use of redundant design and malfunction prevention measures in order to prevent fatal accidents and/or fires in the event any of our products malfunction.
- We strongly recommend our customers to purchase Nippon Chemi-Con products only through our official sales channels. We assume no responsibility for any defects or damages caused by using products purchased from outside our official sales channel or of counterfeit goods. In addition, we will ask the customer to pay the investigation cost for products purchased outside our official sales channel.
- We reserve the right to discontinue production and delivery of products. We do not guarantee that all the products included in this catalog will be available in the future.
The aforementioned does not apply in the case of individual agreements deviating from the foregoing for customer-specific products
- We continually strive to improve the quality and reliability of our products, but in any case that our product does not meet our published specifications, please stop using it promptly and contact us immediately. As for compensation for non-conforming goods delivered by Chemi-Con, we will limit it only to goods found in non-compliance of our published specifications. This may be accomplished by a no cost replacement of non-conforming individual products, a credit of the piece price paid per each individual non-conforming product, or in other ways deemed necessary.
In addition, we have an established system with enhanced traceability, therefore we will limit the applicable lot items for any potential compensation.

[Part Numbering System](#)

[Part Numbering System \(Appendix\)](#)

[Standardization](#)

[Available Items by Manufacturing Locations](#)

[Environmental Measures](#)

[Technical Note](#)

[Precautions and Guidelines](#)

[Recommended Soldering Conditions](#)

[Taping, Lead-preforming and Packaging](#)

[Available Terminals for Snap-in and Screw Mount Type](#)