

# LineCard 2024

The background of the slide is a high-tech, futuristic digital circuit board. It features a central square component with a grid of small lights or connections. The board is illuminated with vibrant blue and orange light trails and bokeh effects, creating a sense of depth and motion. The overall aesthetic is clean, modern, and tech-oriented.

*electronic solutions – made for you*

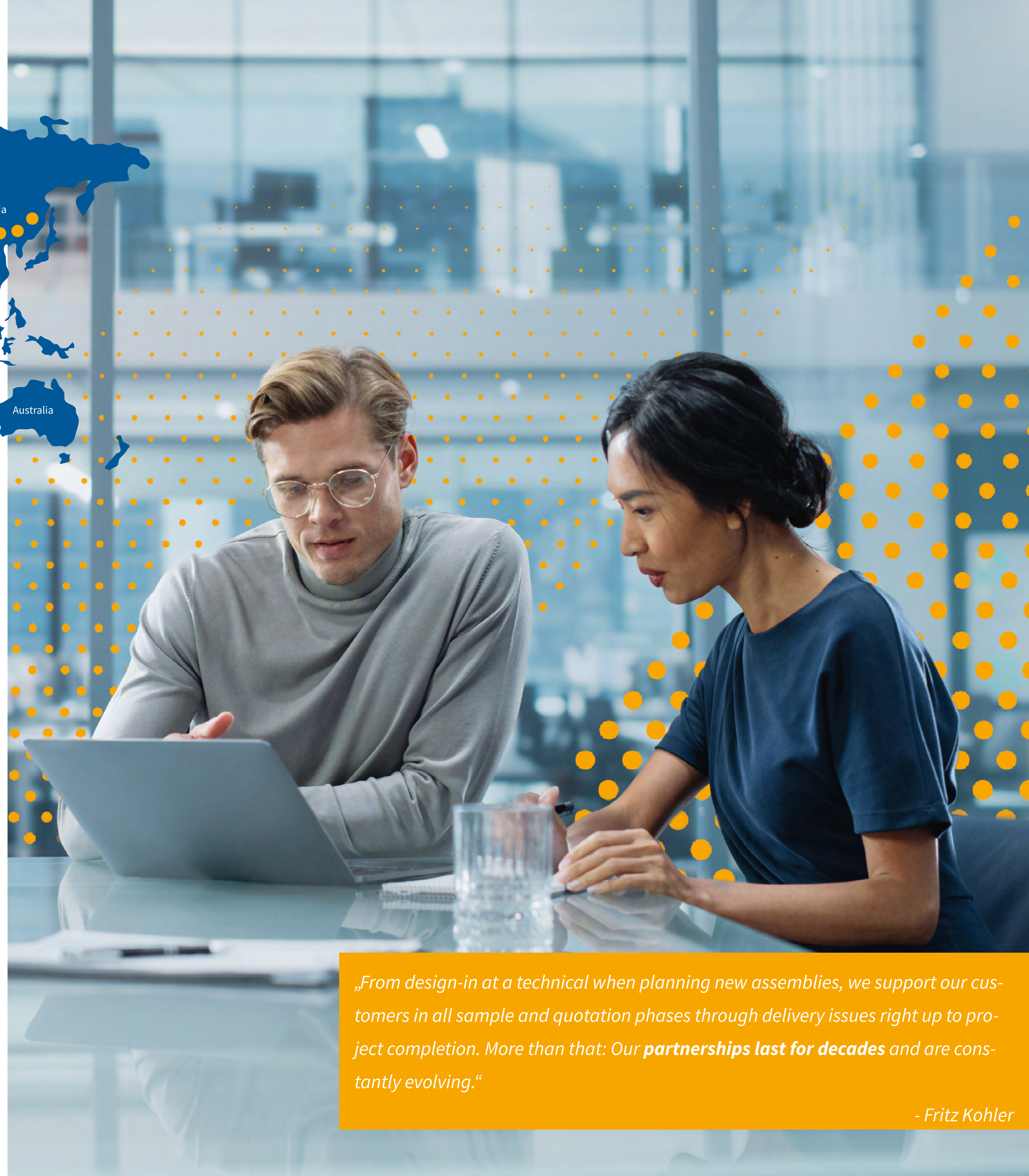


## Key Facts

- alfatec was founded by Fritz Kohler in **1978**
- **Over 45 years of experience**, development and growth
- **Family-run** since the beginning
- More than 200 employees worldwide
- HQ: Germany, Rednitzhembach near Nuremberg
- International locations in China
- Complete range of logistics concepts:  
Kanban, safety stock, EDI/VDI connection, etc.
- Storage area: > 8,350m<sup>2</sup> worldwide

Together we create

**electronic solutions – made for you**



*„From design-in at a technical when planning new assemblies, we support our customers in all sample and quotation phases through delivery issues right up to project completion. More than that: Our **partnerships last for decades** and are constantly evolving.“*

*- Fritz Kohler*



# Our Partners

## Active Components



- SIC MOSFETs
- SIC Diodes

*Bare-Die and Discretes*



- IGBTs
- Si MOSFETs
- SIC Diodes
- Rectifiers
- IPM

*Discretes and Modules*



- Thyristor Diode Modules
- Si Thyristors
- Rectifiers



- SiC MOSFETs
- SiC Diodes

*Bare-Die, Discretes and Modules*



- Motor Control Units**
- MCU
  - Single-Phase ASIC
  - Three-Phase ASIC

- Gate Drivers**
- IPM**



© Fraunhofer IIS / Philip Beran



- Magnetic Field Sensors**
- 3D Hall
  - 6D Hall

## Passive Components



- AC Filter Film Capacitors
- AC Motor Capacitors
- DC-Link Film Capacitors
- Radio Interference Suppression Capacitors
- Radio Interference Suppression Capacitors (THB)
- Polyester Capacitors
- Polypropylene Capacitors
- Snubber Film Capacitors

*Customized DC-Link Modules*



**Capacitors**

- Aluminum Electrolytic Capacitors
- Polymer Capacitors
- Double Layer Capacitors
- Hybrid Polymer Capacitors
- MLCCs

**Core-Materials / Chokes**

- Nanocrystalline
- Amorphous

**Varistors**



**Resistors**

- Radial Lead Type
- Axial Lead Type
- SMD Type
- Array (SIL)

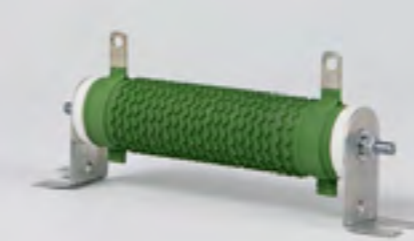


**Double Layer Capacitors**

- Screw Terminal / Weldable Type
- SnapIn / Lug Terminal Type

*Cells, Modules, Racks, Cabinets*

Balancing Boards



**Resistors**

- Axial Lead Type
- Melf



**Double Layer Capacitors**

- SnapIn Type
- Radial Lead Type
- Modules



**Wire Wound**

- Power Inductor ( $\leq 150\text{KW}$ )
- CMC for Signal
- Common Mode Filter
- Ceramic Inductor

**Transformers**

- SMT /THT
- Planar
- Gate Driver
- LLC

**Multi Layer**

- Inductors
- Chip Bead
- Common Mode Filters
- Varistors / Thermistors

**Ring Core CMC**

- PFC Inductors**
- Wireless Charging**
- NFC**
- Tantalum Capacitors**



**Fuses**

- SMD Type
- Axial Lead & Cartridge Fuses
- Radial Lead Type
- Power Fuses
- Accessories

## Optoelectronics



- SMD LED
- Stripes
- Horticulture
- UV
- IR
- Backlight
- MCOB
- Optocouplers



- Arrays
- Radial LEDs
- Dot Matrix
- 7 Segment

## Thermal Management



- Thermal Conductive Foils
- Thermal Conductive Foils Silicone Free
- Softtherm Foils
- Graphite Foils
- Adhesive Tapes
- Thermal Paste
- Injection Moulding Granulate
- Gap Filler Liquid
- Thermal Adhesive



- Fans
- Blower
- Impellers

*AC- & DC-Versions*

**Electronics that connect us**

**Just a phone call or an email away**

Get in touch with your contact person or fill out the following form:

Company

Salutation

Phone

Your message

Name